

# MONTHLY MEMBERSHIP PROGRESS REPORT

LOCATION REP OF SRI LANKA

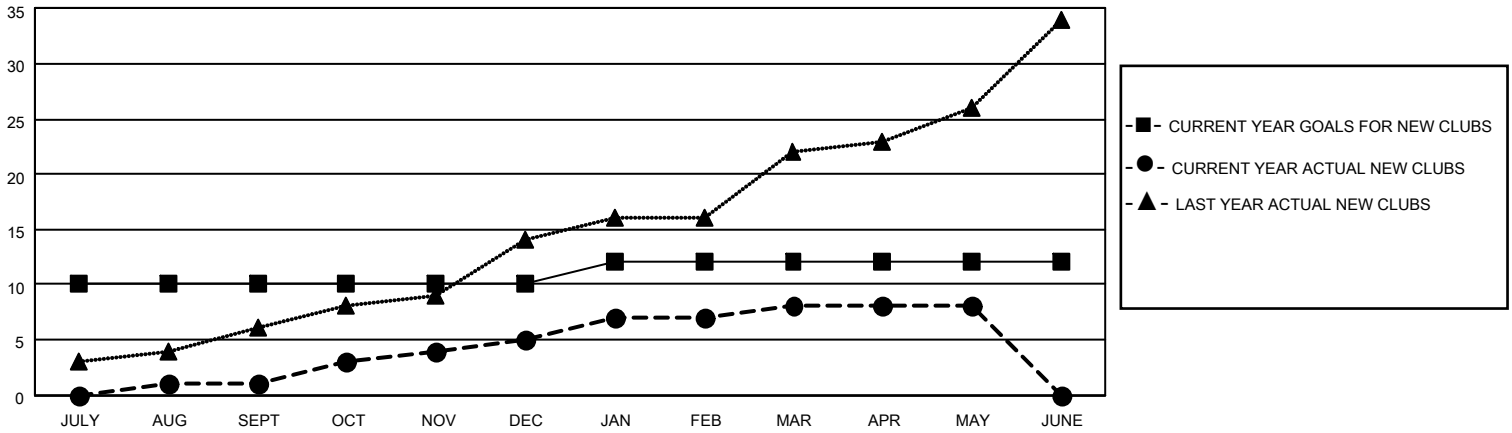
District 306 C1

Results as of: 5/31/2023

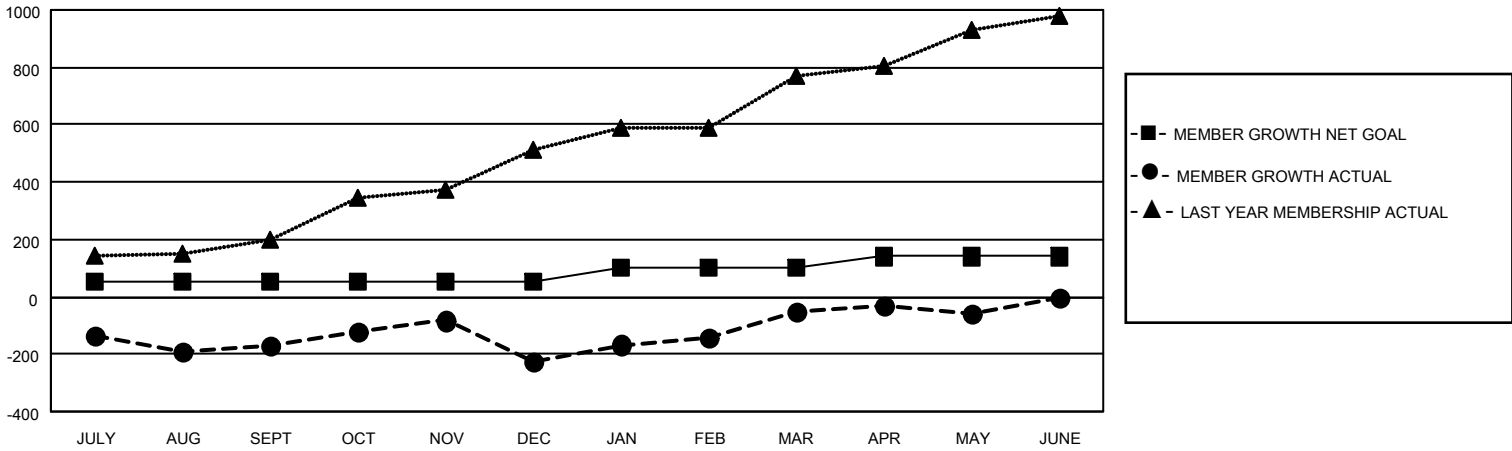
Clubs			
RESULTS FOR 2022-2023			
QUARTER	NEW CLUB GOAL	NEW CLUBS	DROPPED CLUBS
JULY/AUG/SEPT	10	1	4
OCT/NOV/DEC	0	4	2
JAN/FEB/MAR	2	3	0
APR/MAY/JUNE	0	0	0

Members			
RESULTS FOR 2022-2023			
QUARTER	MEMBER GROWTH NET GOAL	MEMBER GROWTH ACTUAL	DROPPED MEMBERS ACTUAL (including transfers)
JULY/AUG/SEPT	50	209	363
OCT/NOV/DEC	0	346	379
JAN/FEB/MAR	50	277	64
APR/MAY/JUNE	40	50	48

**GOALS AND ACTUAL NEW CLUBS CUMULATIVE**



**GOALS AND ACTUAL MEMBERS CUMULATIVE**



<b>DROPPED CLUBS: 6</b>	
<b>DROPPED MEMBERS</b>	
DECEASED	8
CLUB CANCELLED	71
OTHER	775
<b>TOTAL</b>	<b>854</b>

118 CLUBS OF 150 ADDED 1 OR MORE NEW MEMBERS

[CLICK HERE FOR CUMULATIVE MEMBERSHIP DATA](#)

<u>GENDER DISTRIBUTION</u>	
MALE	2,990 (75.24%)
FEMALE	984 (24.76%)
NON BINARY	0 (0.00%)
PREFER NOT TO ANSWER	0 (0.00%)
<b>TOTAL FAMILY UNIT MEMBERS</b>	<b>1,529</b>
<b>FAMILY MEMBERS PAYING HALF DUES</b>	<b>943</b>